



October Lecture Luncheon - October 13, 2015



The Maven Mission to Mars **Bruce Jakosky**

Tuesday, October 13, 2015; 11:30 a.m.
University Memorial Center, Room 235

President's Message	2
Membership	2
Parking for UMC	3
Lecture Luncheons	4
Tell Me More / Misc.	5-6
September Coffee	7
Interest Groups	8-9
Membership Renewal, Donors, Activities, Forms	10-13
Calendar and Executive Board	14

Dr. Bruce Jakosky, a CU Professor of Geological Sciences and the Faculty Research Associate for the Laboratory for Atmospheric and Space Physics (LASP), is the principal investigator for the Mars Atmosphere and Volatile Evolution mission (MAVEN), which gives scientists insight into the history of Mars' atmosphere and climate, liquid water, and planetary habitability. In April 2015, MAVEN had made 1,000 orbits. By the 2030's, it is expected that a man will be sent to Mars.

Jakosky has been involved with many spacecraft missions including Viking, Explorer, and Clementine, and he is involved in planning future spacecraft missions. He has published the books *The Search for Life on Other Planets* and *The Search for Life in the Universe*. He is an expert on extraterrestrial life. He heads CU's team in the NASA Astrobiology Institute. He serves on numerous national advisory committees.

MAVEN, launched on November 18, 2013, arrived in the orbit of Mars on September 21, 2014. What have we learned since? What do we hope to learn in the future?

[Click here for more about the "MAVEN project"](#).

The Maven program was just selected as one of the Governor's 2015 awards for High-Impact Research—a winner in the "Earth Systems and Space Sciences" category. The award will be presented at the Denver Museum of Nature and Science on October 8.

GUESTS ARE WELCOME (as usual) to attend this very exciting Lecture Luncheon. We suggest you make your reservation(s) early as we are anticipating a larger crowd than usual for this Lecture Luncheon, and seating is limited because of fire codes.

President's Message
Hear from our
2015-16 President, Diana
King
See Page 2 for Details...

Upcoming Lecture
Luncheons
Take a peek at our
speakers this season.
See Page 4 for Details...



Lecture Luncheon payment must be postmarked **NO LATER than October 6**. Please send payment of \$22 or questions to Janet Kern, 2725 Overlook Drive, Broomfield, CO 80020, (wolfkern2725@gmail.com), 720-887-3417. Special lunches are available and must be requested in advance: gluten-free, vegetarian, or dairy-free options available.

Pay your dues by October 15 to be listed in the Directory.

President's Message



Once again—welcome back!

We had a very successful Membership Coffee on September 8 with nearly 100 in attendance. I'd like to extend a special thanks to Patty Ludke and her team, Kathy Randall and Linda Groth, for helping plan and prepare for the venue. Another special thanks to Kathryn Wardell, Kathy Terrill, Mary Huffman, Linda Groth, and A.D. Chesley for helping members with check-in, dues, donations, and Lecture Luncheon payments. The turnout was such that we ran out of chairs and had to get more. Hurray! (See photos on page 7.)

We have an excellent start for our scholarship donations this year. There is still time to donate and provide even more opportunity for our mature students to finish their last two years of a Bachelor's degree program at CU Boulder. Our help is so very much appreciated.

Please pay your dues by October 15 to remain on our roster for the year, and of course, donations are welcome. As you know, membership is necessary to continue in our Interest Groups. Our November directory will include all paid members.

We have another opening on the Board. If you haven't participated in the Board I encourage you to consider nominating yourself. We have a lot of fun at Board meetings. It's definitely a good way to get to know folks well. For this year we are in need of a Membership Chair. For next year Janet Brewer (email: dtbjhb@aol.com) will be pleased to take your self-nomination or nomination of a friend.

Our October Lecture Luncheon is coming up. The week before, our luncheon speaker is receiving a special Governor's award for High-Impact Research for the MAVEN Mission to Mars. Be sure to get your tickets early since we expect to have a large turnout. We are reserving two rooms with food in an adjacent room so that we can have more tables and chairs available in the dining room. Please offer assistance to carry a plate or beverage for others with mobility issues.

We look forward to another year of friends, fun, growth, and education.

Diana King

President 2015-16

Membership Courtesy

If anyone knows of a member who would appreciate a card, note, or any personal contact due to illness, death, or other reasons for support please inform Mollie Morton, 303-494-5486 or mollie.morton@colorado.edu.

Membership Dues

\$30 annual dues are due by October 15. That is the cutoff deadline to be included in this year's October directory. Please send your dues in early so that we can include you. Checks made out to UWC can be sent to **P.O. Box 18844, Attn. Membership, Boulder CO 80308-1844**. We encourage you to consider including your **scholarship fund donation** and increase your check amount accordingly.

If you have questions regarding your UWC Membership please email Kathryn Wardell, Acting UWC Membership Chair at uwcmembershipchair@gmail.com.

Please see the Membership Form on page 12.

Important Notice re: PARKING near UMC

DRIVE and PARK or PARK and RIDE? HOW TO ATTEND EVENTS AT UMC

Euclid Parking Update

As some of you may know, CU is planning a major remodel of the Euclid Parking Garage. At the time of this writing, the Euclid Garage remains open and you will be able to park there for upcoming Lecture Luncheons. However, the payment scheme for parking there has changed. The lot is no longer manned. Instead, you purchase parking at a paystation located near each pedestrian exit. Following the prompts at the paystation, you enter your car license plate number and pay in cash or by credit card. The parking price is \$2.00 per hour for up to 3 hours and can be purchased in increments. You do not need to put the receipt onto your car dashboard.

Consider Taking the Bus

Unless you are carpooling and sharing the cost of parking, it may be more cost effective to take the bus. Several bus routes, including the SKIP, the 204, and the DASH, stop on Broadway very close to the University Memorial Center (UMC). Other buses, including the STAMPEDE and the HOP, stop on 18th Street just behind UMC.

You can figure out the best route from your house by using the RTD Trip Planner

<http://www.rtd-denver.com/GoogleTripPlanner.shtml> .

You enter the address from which you are starting (your house), enter the address at which you want to end (Broadway and Euclid Ave, Boulder), and the time at which you want to arrive. Click "Plan Your Trip" and RTD will figure out your choice of routes including any transfers you have to make. Some bus stops have shelters, many bus stops have benches, and all bus stops are marked by a red and white sign that lists all routes that stop at that location.

If there is no easy bus route from your house, you can start at a Park and Ride or plan some shopping at the 29th Street Mall before or after the UWC event and park there. The HOP is an easy ride from the mall and runs about every 10 minutes. Catch the clockwise bus on 29th Street just across from Macy's entrance. It will take you to 18th Street behind UMC. When you return, take the counter-clockwise bus from the east side of 18th Street. The HOP goes in a loop, so either direction will get you there, but it is a shorter route on the south side of the loop.

The one-way fare on the bus is \$2.25, but for Seniors it is only \$1.10. You need to pay with the exact amount or use a ticket from a 10-ride booklet, which you buy at the bus station (\$20 regular; \$10 Senior).

If you are riding two different buses, **be sure to ask for a transfer**, which you show the driver on the second bus. If you are lucky enough to have an EcoPass, you ride for free.

If you are still a little nervous about riding the bus, see RTD's six steps for "How To Ride Bus."

<http://www.rtd-denver.com/HowToRideBus.shtml> or find Kathy Randall at a UWC event and ask her for the scoop.

Nomination of Officers for 2016-17

The Nominating Committee has been formed and includes Janet Brewer, Frieda Holley, and Mary Huffman.

Their task this year is to identify possible candidates for the President Elect, Secretary Elect, and Treasurer Elect for 2016-2017.

If you have any nominees for these positions, or would like to volunteer yourself, please contact one of the members of the Nominating Committee prior to October 3, 2015. Please send comments or nominations to Janet Brewer dtbjhb@aol.com.

Janet Brewer, Chair Nominating Committee

Upcoming Lecture Luncheons

The price of the luncheons is \$22; reserve the whole series for \$110. Make checks payable to "UWC" and note "Lecture Luncheon" in the memo. Please send payment or questions to: **Janet Kern, Attention: UWC Lecture Luncheon, 2725 Overlook Drive Broomfield, CO 80020 or 720 887-3417.** Please do not combine lecture lunch payments with dues payments. [Lecture Luncheon Registration Form is on Page 12.](#)

November

Encounters at the Heart of the World: A History of the Mandan People



NOTE DATE and location!!!

Elizabeth Fenn

Tuesday, November 3, 2015
11:30 a.m.
University Memorial Center
Glenn Miller Center Ballroom
(Reservations and payment due October 27)

Elizabeth Fenn is the Chair of the History Department at CU Boulder. The "Encounters" book won the 2015 Pulitzer Prize for History.

December

An Insider's View of a Female Reporter in a Refugee Camp in Uganda



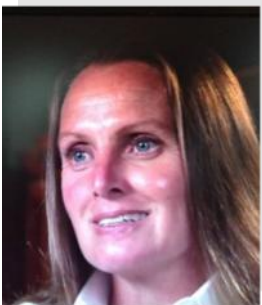
Aimee Heckel

Tuesday, December 8, 2015
11:30 a.m.
University Memorial Center;
Room 235
(Reservations and payment due December 1)

Aimee Heckel is an award-winning columnist for the Daily Camera. Her Uganda assignment ended up changing the course of her life.

February

How Kindness Ends Human Trafficking



Beth Klein

Tuesday, February 9, 2016
11:30 a.m.
University Memorial Center
Room 235
(Reservations and payment due February 2)

Beth Klein is an accomplished lawyer who chooses to dedicate her life and legal skills to end human trafficking. She will explain the effects of kindness in human trafficking.

March

Bees' Needs and Our Environment



Alexandra Rose

Tuesday, March 8, 2016
11:30 a.m.
University Memorial Center
Room 235
(Reservations and payment due March 1)

Alexandra Rose is the Citizen Scientist Coordinator at the University of Colorado Museum of Natural History and Science Discovery.

Maybe you will be convinced to be her next volunteer in the Bees' Needs Project.

Tell Me More... About Alan Cass



After 47 years as curator of the Glenn Miller Archive, Alan Cass retired on July 1, 2015. Alan Cass was a speaker at our Lecture Luncheon of October 9, 2012, entertaining us with background and information about Glenn Miller, one of the best known and widely acclaimed leaders of the Big Band Era, and an alumnus of the University of Colorado.

Alan Cass spent much of his career building and maintaining memorabilia of Glenn Miller. Beginning with a simple Glenn Miller display at UMC in 1969, the archive grew beyond even Mr. Cass's expectations. The relationships developed with musicians, broadcasters, producers, collectors, friends, and music lovers from around the world resulted in the 56 collections that comprise the extensive Glenn Miller Archive, serving scholars, students, and the public.

Thomas Riis, director of the American Music Research Center at CU said that "Alan has worked tirelessly for most of his life in Boulder to get the message out that Glenn Miller's home and heart were in Colorado and at CU. We need to appreciate this fact and help to preserve Alan's work and the music of the Big Band era."

In addition to being curator of the Glenn Miller Archive, Alan Cass was director of the Coors Events Center and served as public address announcer for the Buffs and the Broncos.

UWC wishes him well in his retirement.

Tell Me Even More...

About Andrew Margolin:

Andrew Margolin, who was featured in the May *MESSAGES*, continues to excel. He is currently participating in the U.S. GEOTRACES Arctic Expedition and is writing a blog about his adventures. Read it and see some wonderful pictures here:

<http://arctic-andy-usaos2015.blogspot.com/>



About the KEPLER Mission:

NASA announced in July that the Kepler spacecraft has spotted "Earth's bigger, older, cousin" – the first nearly Earth-sized planet to be found in the habitable zone of a star similar to our own.

See more here: <https://www.nasa.gov/keplerbriefing0723>

About Clay Evans, Searching for My Grandfather



Clay Evans spoke at our March 2015 Lecture Luncheon about the search for the remains of his grandfather, killed in action at Tarawa during WWII. This summer these remains were recovered along with those of dozens of other fallen Marines.

See more here:

<http://www.marinecorpstimes.com/story/military/2015/07/02/moh-recipient-remains-battle-tarawa/29613679/>

(Continued Next Page)

Tell Me Even More... (Continued)

About the Wild Animal Sanctuary in Keenesburg, CO

The November 2014 *MESSAGES* updated you about the amazing rescue of 25 abused Bolivian circus lions by the Wild Animal Sanctuary. Executive Director Pat Craig was speaker at our October 2010 Lecture Luncheon.

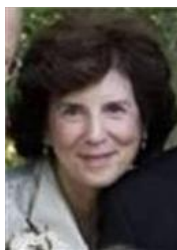
The Wild Animal Sanctuary is in the news again due to a change in their visit charge and donation structure. There will no longer be “entrance fees” to visit the Sanctuary. Instead, “Active Supporters” – those who donate a minimum of \$200 per year – and their guests, will be allowed unlimited entry.

Persons who are not yet Active Supporters can make an “Evaluation Donation” of \$50 for their first visit. Craig explained that the actual cost per visitor is nearly \$30 per visit, not nearly covered by the previous entrance fees.

He reminds us that the institution was never created for display of animals, but was always a sanctuary for rescued animals and was closed to the public for its first 22 years.

Persons over 70 years of age who are interested in becoming Active Supporters can make their first visit free of charge. See more here: <http://www.wildanimalsanctuary.org/>

Obituary Notice



Margaret Peterson died peacefully August 24, 2015 at the Boulder Community Hospital, surrounded by family and friends.

[For more from the obituary in the Daily Camera, please click HERE](#)

THANK YOU to those of you who donated to the UWC scholarship fund in her memory.

Constitution - Recommended Change

The Advisory Planning Committee proposed a simplification change to the UWC Constitution and Bylaws, to be presented to the general membership at November’s Lecture Luncheon.

The proposed changes are in Article II Section 2 of the Constitution and involve striking the words “and to advance matters of university interest” and adding, after the word ‘university’, the words “and university community”.

The Article currently reads:

Article II

Section 2. To provide assistance to the university as the UWC so desires, and to advance matters of university interest.

The change will have the article read:

Article II

Section 2. To provide assistance to the university and the university community as the UWC so desires.

Mary Huffman, Advisory Planning Committee Chair

Special Announcement:

Jyotsna Raj regrets the inadvertent use of the UWC mailing list for campaign literature mailing. She apologizes for the error. This has been corrected.

September Membership Coffee

The Membership Coffee was held in UMC Room 235 on September 8.

Members and potential members learned about the UWC programs for the year and about the interest groups.



Virginia Stringi introduces the opera Brunch on March 13



Nancy Liggett speaks about the many UWC Interest Groups available to members



Patty Ludke talks about the five speakers for our season's Lecture Luncheons.

<i>Interest Group Meeting Time and Place</i>	<i>Chair(s) Information</i>	<i>Special Notes</i>
Bicycling Meets every Thursday from May through October.	Mary Greenwald (303-443-6478) m.b.greenwald@comcast.net	An email prior to the ride will provide time and meeting place. Please contact the chair for more information.
Bicycling – Easy Riders Wednesdays from May through October.	Mary Greenwald (303-443-6478) m.b.greenwald@comcast.net	An email prior to the ride will provide time and meeting place. Please contact the chair for more information.
Book Group – Afternoon 2:00 p.m. Fourth Tuesday, members' homes	Ami Sadler (303-938-8406) amisadler@earthlink.net Mary Anna Dunn (303-530-0184) dunn.maryanna@gmail.com	October 27 we will discuss <i>The Age of Innocence</i> by Edith Wharton. The location is TBD. Contact chairs for details.
Book Group - Evening 7:15 p.m. Second Thursday, members' homes.	Virginia Stringi (303-955-1860) vstringi@comcast.net Kathleen Salzberg (303-499-3128) Kathleen.Salzberg@colorado.edu	October 8: <i>Lady in Gold: The Extraordinary Tale of Gustav Klimt's Masterpiece: Portrait of Adele Bloch-Bauer</i> by Anne-Marie O'Connor. Hostess Beth Rauch: 303-442-2704; etrauch@comcast.net) Books available at Boulder Bookstore.
Book Group – Classics Plus	Barbara Turner (303-471-9778) Barbara-Turner@centurylink.net	Contact chair for details.
Book Group - Small	Kathy Randall (303-530-1095) katherineran@gmail.com	Group is at capacity. Contact Kathy Randall to start a new book group.
Book Group Small—Fiction, Nonfiction	Nancy Liggett (970-596-4353) neliggett@gmail.com	
Book Group – Third Monday	Helen Hooper (302-421-4382) hpharvco@gmail.com	Group is at capacity. Contact chair to be put on a waiting list.
Bridge on Wednesday 1:00 - 3:00 p.m. First Wednesday, members' homes.	Barbara Turner (303-471-9778) Barbara-Turner@centurylink.net Sharon Gabriel (303-494-7643) skgabriel@comcast.net	Contact chairs for details.
Downhill Skiing Wednesdays in the wintertime, weather permitting	Arlene Gerwin (303-494-1307) asgerwin@comcast.net	Emails will provide details. Contact the chair to be added to the list.
French Conversation	Dot Thompson (303-494-4423) thompsondot@hotmail.com Ruth Stern (303-499-6995) ruthstern@gmail.com	Group is currently full.
French Conversation 2 2nd and 4th Wednesdays 10:30 a.m.—noon at Panera Bread in the 29th Street Mall	Gisele Berzins (303-408-0366) gigiberzins@gmail.com	Please contact chair for details. All speaking levels.
Garden Usually meets third Wednesdays from April to October.	Jyotsna Raj (303-447-8831) Jyotsna.raj@colorado.edu Virginia Donegan (303-635-6685) Ginnydon22@yahoo.com	Contact chair for details. No Garden Group Meeting in September.
Hiking Every Friday Meet east end of the lower level of Macy's parking garage.	Heidi Lynch (303-499-5779) hslynch@comcast.net Frieda Holley (303-499-3733) holleyf@msudenver.edu	This year-round group meets at 9:00 a.m., September to May and at 8:30 a.m., June to August.

<i>Interest Group Meeting Time and Place - Continued</i>	<i>Chair(s) Information</i>	<i>Special Notes</i>
Italian Conversation 1:30 – 2:30 p.m. Every Wednesday The “Y,” 2850 Mapleton Avenue	Maxene Wilson (303-530-4619) maxene@earthlink.net	Contact chair for details.
Music Time varies Second Mondays of most months, in members’ homes.	Judy Owens (303-494-0196) owensj4@mac.com Pat Phillipson (303-443-9839) phillipp@colorado.edu	We especially welcome new performers. Contact chairs for details.
Needlecraft 1:30 p.m. Second and Fourth Thursdays, members’ homes.	Ginnie Ross (303-442-6014) vross921@gmail.com Georgianne Campbell (303-499-2798) rpcampbell@att.net	An email will be sent to members with details prior to each meeting.
On the Road Again Various times, various venues	Karen Diamond (303-939-8656) Karen.diamond@mac.com	Contact chair for details.
Out to Lunch 12:00 p.m. Fourth Wednesday Meet at the restaurant at noon.	Jyotsna Raj (303-447-8831) jyotsna.raj@colorado.edu Virginia Donegan (303-635-6685) ginnydon22@yahoo.com	Meeting dates provided by email. September 23rd group will meet at noon at the Dining Hall at Chautauqua on Baseline Road. Please contact a chairperson.
Readers’ Theatre	Marilyn Wasmuth Wasmuth27@comcast.net	Group is currently full. See Readers’ Theatres 2 or contact chair to be placed on waiting list.
Readers’ Theatre 2 6:30 P.M. First or Second Monday Clubhouse at Villa Del Prado	Patty Ludke (303-440-9590) pattycake.21@juno.com Kathy Randall (303-530-1095) katherineran@gmail.com	Email will provide details.
Snowshoeing Thursdays, to be determined.	Mary Greenwald (303-443-6478) m.b.greenwald@comcast.net	Contact chair for details.
Spanish – Beginning Conversation Mondays, 3:45 to 4:45, twice a month	Diana King (303-530-1860) dianaking.boulder@gmail.com	Contact chair to join a group session to learn or improve your beginning Spanish. Contact chair for time and place.
Spanish – Conversational 3:45 p.m. Most Mondays Local restaurant	Diana King (303-530-1860) dianaking.boulder@gmail.com	Contact chair for meeting time, place and details.
Sunday Afternoon at the Movies Matinee Fourth Sunday Local movie theatre	Patty Ludke (303-440-9590) pattycake.21@juno.com Kathleen Newton (720-548-8661) kathleen_n@comcast.net	Email provides details of movie selection and meeting time. Contact chairs to join the list.
Tea and Travel 1:15 p.m. Oct.-Nov. and Jan.-March, usually on the third Tuesday of the month	This group is currently on hiatus awaiting a chair.	Contact Nancy Liggett if interested at 970-596-4353 or neliggett@gmail.com Group meets in members homes.
Theater Goers	Gail Moyes (303-786-9142) gpmoyes@gmail.com	The Theater Goers group is at capacity. Contact chair for upcoming activity details.
Theater Goers 2	Kathleen Newton (720-548-8661) Kathleen_n@comcast.net	The Theater Goers 2 group is looking for a co-chair.

To start a new interest group requires at least 5 members and a chairperson.
 Contact Nancy Liggett (neliggett@gmail.com) for more information.

Membership Renewal

Dues. It's that time of year again to be filling out a membership form and renewing your membership in UWC for the 2015-2016 year. The annual dues are still just \$30.

Directory Due Date. The due date for inclusion in the Electronic UWC Directory is **October 15.**

A membership form is included in this issue of *MESSAGES*. Please print the form, fill it out, and include it with your dues. Checks are made out to UWC and should be mailed to P.O. Box 18844, Attn. Membership Chair, Boulder, CO 80308-1844. The electronic directory will be mailed to all those who have paid their dues.

Benefits. Benefits for UWC members include: 1) a CU email account; 2) a CU guest BuffOne card, which provides library borrowing privileges and option to apply cash which can be used for copy machines and discounted meals at Center for Community and UMC cafeterias (cost \$5 per year); 3) a free library card (without a BuffOne card) for borrowing books. Please contact A.D. Chesley (303-938-8150; adiches@aol.com) if interested in any of these benefits.

Donations. Since 1982, the UWC has provided more than \$200,000 in scholarship to nontraditional CU-Boulder students. Your donation supports this most important project. This is a good time of year to be thinking ahead about scholarships and *including a donation for the UWC scholarship recipients* along with your dues. The names of those donating to the scholarship fund will be published monthly in *MESSAGES* as they come in. Donations may also be designated in Honor of or in Memory of an individual.

We hope to receive your renewal in the very near future and look forward to seeing you at UWC functions this year.

See Membership Form on Page 12.

Kathryn Wardell, Acting UWC Membership Chair

Donors May 15 through September 8, 2015

Thank you to all of you who have added a donation to our scholarship fund along with your annual dues since May 15. As of September 8 we have received almost \$5000.

Joyce Albersheim	Linda Groth	Pat Moncrieff	Rebecca Roser
Arlene Blewitt	Isabelle Henderson	Gail Moyes	Virginia Ross
Linda Blomquist	Ellen Holland	Marcy Munson	Ame Sadler
Janet Brewer	Mary Huffman	Jana Murphy	Marian Safran
Helen Brown	Patricia Erwin	Jean Nelson	Barbara Sanford
Georgianne Campbell	Karon Johnson	Rhoda Nozik	Marion Sauer
Julianne Cassady	Janet Kern	Judith Owens	Carol Saunders
Peggy Cha	Diana King	Becky Palmer	Nancy Schwiesow
Charlotte Corbridge	Elaine Krupnick	Marilyn Peltzer	Beverly Sears
Carol Crow	Nancy Liggett	Gloria Phillips	Yael Sears
Frances Dahlberg	Lois Linsky	Judith Ramsey	Karen Shay
Marjorie DeFries	Betty Lipstreu	Kathy Randall	Carol Smoot
Alice Doyle	Rhea Little	Susan Rapp	Joyce Spencer
Mary Anna Dunn	Mareike Ludkewycz	Beth Rauch	Kathryn Terrill
Anitta Frant	Mellissa Mahaney	Judy Reid	Tamera VanSpiell
Srlene Gerwin	Diana Maiden	Judy Richtel	Cynthia Warshaw
Ellen Gille	Lucy Maret	Marge Riddle	
Doris Goodrich	Mary McClanahan	Jean Rohrschneider	

Spring Scholarship Luncheon - April 2016



Mark your calendars for **April 19, 2016**, for the Annual Spring Scholarship Luncheon to be held at the Boulder Country Club.

This is an opportunity to support and celebrate the UWC scholarship winners, to share a scrumptious lunch and lively conversation with friends and to enjoy seeing the latest spring fashions from one of our favorite clothiers, **Chico's**.

Watch future UWC *MESSAGES* for more detailed information regarding this popular event.



Historian Scrapbook



The Historian Scrapbook for UWC 2014-15 was printed as a bound book.

Orders for copies may be registered by contacting Kathy Terrill at wakaterrill@ecentral.com through October.

The book contains wonderful pictures of our interest groups and events from the past year.

The original copy cost approximately \$40. It is possible that the cost will be somewhat less per scrapbook when several copies are ordered at one time. Those who order will split the shipping cost among themselves.

A one-time order will be placed in November.

Opera Brunch - Coming in March 2016



Mark your calendars for Sunday, March 13, 2016, for our annual Opera Brunch, starting at 11:30 a.m. at the University Memorial Center, and followed by CU's Opera presentation of Francis Poulenc's *Dialogues of the Carmelites* at Macky Auditorium at 2:00 p.m.

Dialogues of the Carmelites grapples with such timeless human emotions as fear, despair, and faith. It is a dark, intense opera based on the persecution of nuns at the convent at Compiègne during the French Revolution.

Reservation forms will be printed in subsequent *MESSAGES* newsletters.

UWC Boulder Membership Form - 2015-16

Welcome! Please fill out the membership form completely, even if you were a member last year. It is important that we verify all the information presently in the database. Please print clearly, especially your email address and check if it is an update.

MESSAGES will be emailed to our membership.
The UWC membership year runs from June 1 to May 31.

Kathryn Wardell, Acting Membership Chair
303-494-3285
uwcmembershipchair@gmail.com

Kathy Terrill, New Member Chair
303-530-9438
wakaterrill@ecentral.com

Name _____ Phone _____

Address _____

Email address for newsletter _____
(please print clearly) new email address

- I am enclosing my annual dues of \$30. I am a returning member new member.
- I am enclosing an additional tax-deductible contribution for the scholarship fund.
 \$25 \$50 \$100 Other \$ _____
- I am enclosing this tax-deductible contribution for the scholarship fund in **Honor/Memory** of:

Make all checks **payable to UWC** (may combine dues and donations; please **do not combine with luncheons**)
Mail to: **UWC Membership, PO Box 18844, Boulder, CO 80308-1844**

I have a friend who might like to join the UWC. Please send membership information to:

Name _____ Phone _____
Address _____ Email _____

UWC Interest Groups

These are some of the current interest groups. Please see the interest group chairperson if you wish to join. (The chairpersons will be on the website, www.boulderuwc.org, and in MESSAGES pages 8 and 9.)

Bicycling	French Conversation (Full)	Readers' Theatre (Full)
Bicycling—Easy Riders	French Conversation 2	Readers' Theatre 2—Evening
Book Group—Afternoon	Garden	Snowshoeing
Book Group—Evening	Hiking	Spanish—Beginning
Book Group—Fiction	Italian Conversation	Spanish—Conversational
Book Group—Third Monday	Music	Sunday Afternoon at the Movies
Book Group—Classics Plus	Needlecraft	Tea and Travel
Bridge	On the Road Again	Theater Goers (Full)
Downhill Skiing	Out to Lunch	Theater Goers 2

For other interest group suggestions please contact Nancy Liggett, neliggett@gmail.com.
Please see updated list of interest groups on pages 8 and 9. They are expanding as we go to print.

Registration Form for **UWC Lecture Luncheons**

Enclosed is my check for \$_____ (**\$22 per luncheon per person**) for the following luncheon(s) plus added (optional) donation of \$_____ for the scholarship fund. Guests are always welcome to attend for the same price as members.

UWC Member Name: _____

Email: _____ **Phone:** _____

Number of Reservations	If bringing a guest, name of guest	Date/Location	Speaker/Topic
		10/13/15 UMC 235	Dr. Bruce Jakosky The MAVEN Mission to Mars
		11/3/15 UMC Center Ballroom	Dr. Elizabeth Fenn Encounters at the Heart of the World: A History of the Mandan People
		12/08/15 UMC 235	Aimee Heckel Insider's View of Being a Female Reporter in a Refugee Camp in Uganda
		02/09/16 UMC 235	Beth Klein How Kindness Ends Human Trafficking
		03/08/16 UMC 235	Dr. Alexandra Rose Bees' Needs

Special Diet Meal needed (gluten-free, vegetarian, dairy free); please specify type and for whom)

Lecture Luncheon checks are due one week before each luncheon.
Please make check payable to UWC.

Mail check and this completed form to our Hospitality Chair:
Janet Kern
2725 Overlook Drive
Broomfield, CO 80020

2015-16 Calendar

September	1	Board Meeting
	8	Membership Coffee
	10	<i>MESSGES</i> deadline
October	6	Board Meeting
	10	<i>MESSAGES</i> Deadline
	13	Lecture Luncheon
	15	Membership Deadline for Name to Appear in Directory
November	1	New Member Wine & Cheese
	3	Lecture Luncheon
	10	<i>MESSAGES</i> Deadline
	10	Board Meeting
December	1	Board Meeting
		NO <i>MESSAGES</i> IN JANUARY
	8	Lecture Luncheon
January		No Planned Meetings or Events
	10	<i>MESSAGES</i> Deadline
February	2	Board Meeting
	9	Lecture Luncheon
	10	<i>MESSAGES</i> Deadline
March	1	Board Meeting
	8	Lecture Luncheon
	10	<i>MESSAGES</i> Deadline
	13	Opera Brunch
April	5	Board Meeting
	10	<i>MESSAGES</i> Deadline
	19	Scholarship Luncheon
May	10	Honors Reception
	17	Tri-Board Meeting

Executive Board 2015-16

President	Diana King
President-elect	Janet Brewer
Secretary	Carol Dunnack
Treasurer	Arlene Gerwin
Past President	Joyce Spencer
Advisory/ Parliamentarian	Mary Huffman
Communications	Mollie Sue Morton
EMail	A.D. Chesley
Historian	Kathleen Newton
Honors Reception	Rita Riis
Hospitality	Janet Kern
Interest Groups	Nancy Liggett
Margaret Willard Award	Jane Massie
Membership	<i>Position Available</i>
New Members	Kathy Terrill
Membership Directory	Kathryn Wardell
<i>MESSAGES</i>	Joyce Spencer
Nominating Committee	Janet Brewer
Opera Brunch	Virginia Stringi
Program Chair	Patty Ludke
Scholarship Committee	Becky Palmer
Scholarship Luncheon	Tamera Van Spriell Linda Norberg
Telephone Tree	Linda Blomquist
Webpage	Carol Etges
Secretary Elect	TBD
Treasurer Elect	Arlene Gerwin